

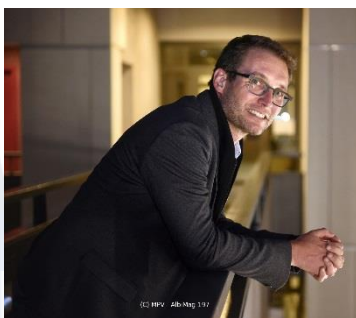


“SMART GRIDS AND SMART CITIES” INTERNATIONAL SUMMER SCHOOL 6-8 June 2017 - Barcelona

DAY 2: SMART CITIES

TABLE 3: SMART CITY AND URBAN SUSTAINABLE DEVELOPMENT

What Smart-city means for a geographer? Mathieu Vidal, LISST-Cieu Laboratory.



Mathieu VIDAL is associate professor in Geography & Urban planning at Champollion University, Albi (France), and member of the LISST-Cieu Laboratory (CNRS) at Toulouse Jean-Jaurès University (France). His research considers different fields, as for example Territorial Competitivity, Public Services

Policies, and Geography of the Information and Communication Technologies (ICT). In this field, M.Vidal focuses in particular on:

- Cities and ICT // Digital and Smart Cities
- Innovation, Modernization, of the local administration and uses of ICT
- National and Local policies support for the dissemination and the social uses of ICT
- Users and uses of ICT // Social networks, eReputation // ICT and Risks